

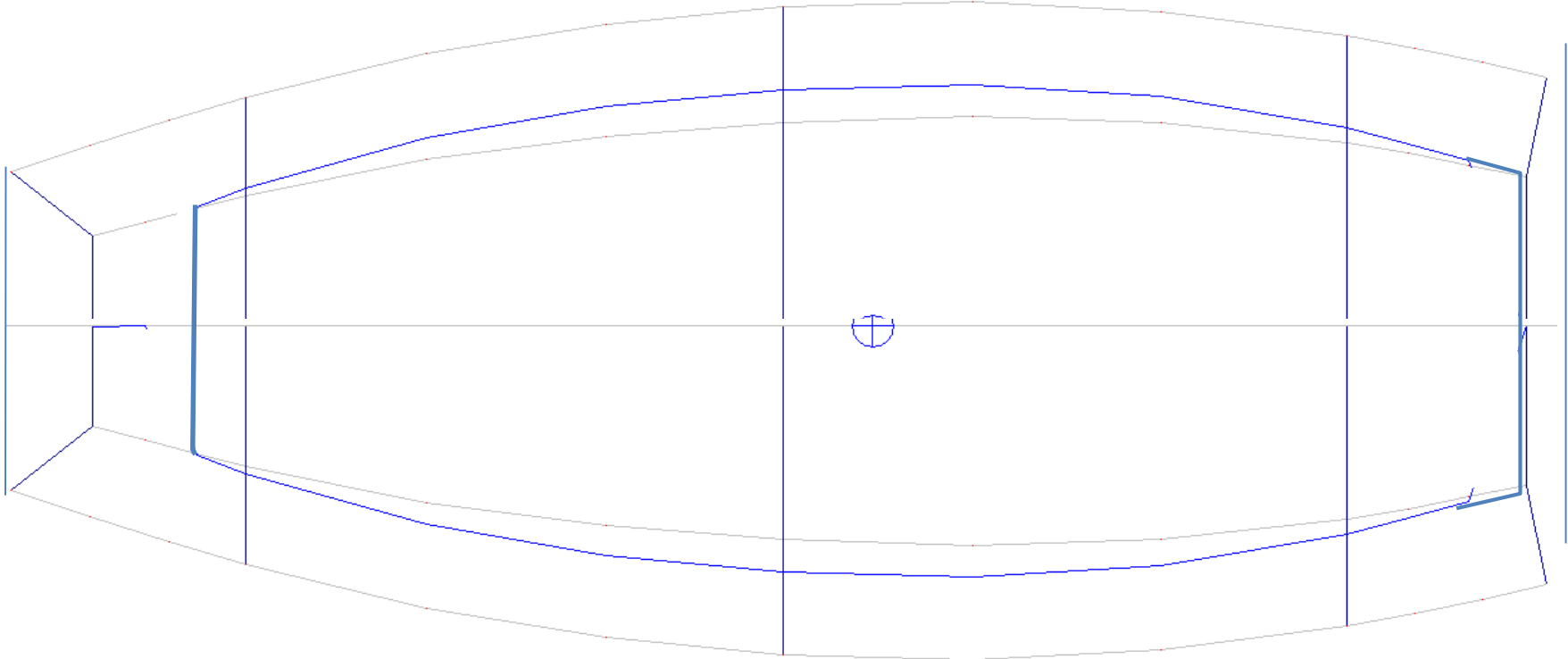
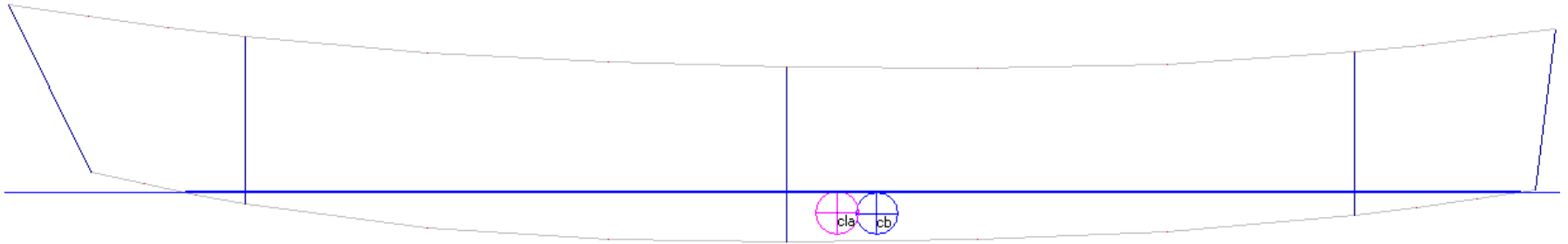
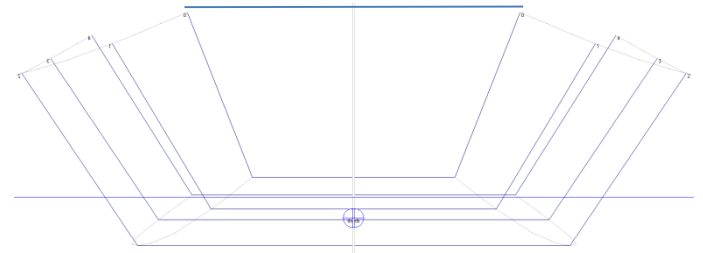
14' Pelicanish Boat

LOA: 14'

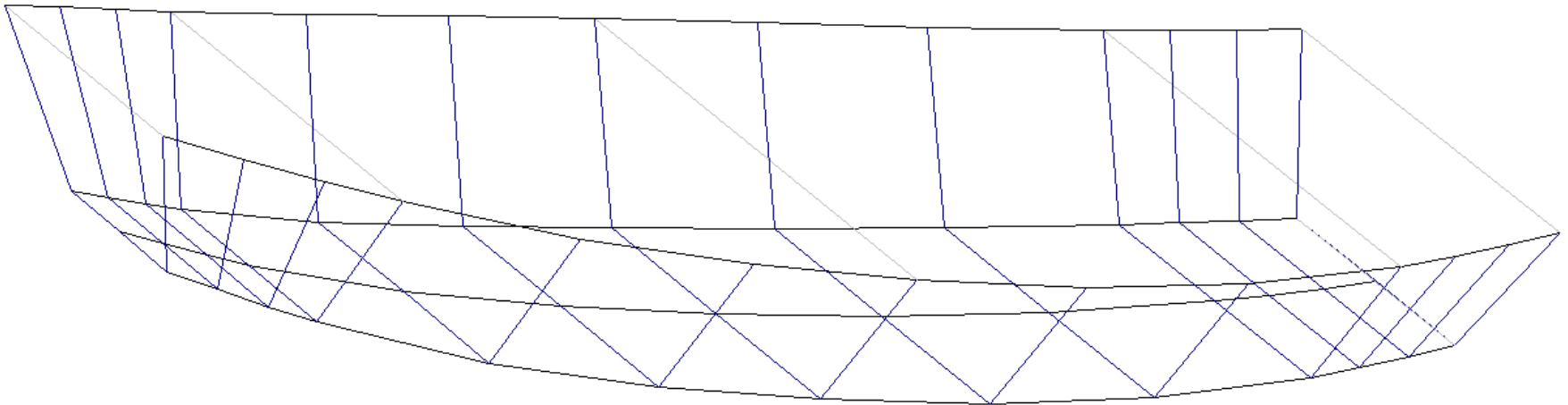
Beam: 6'6"

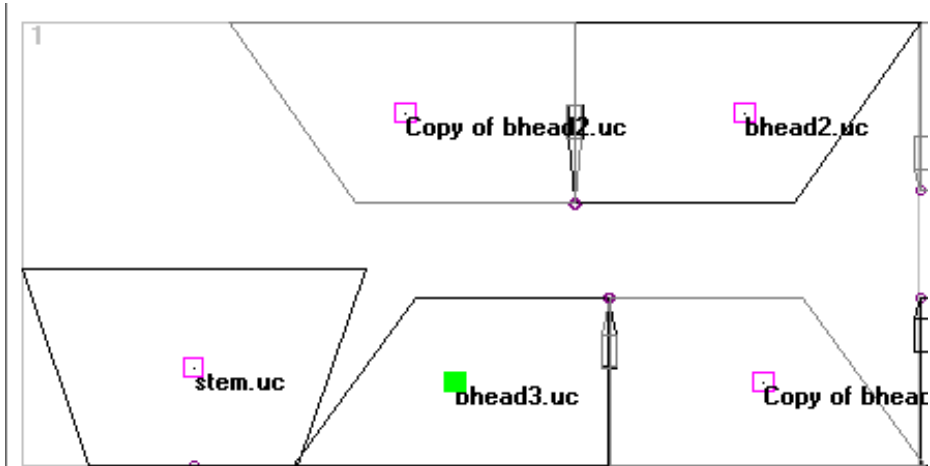
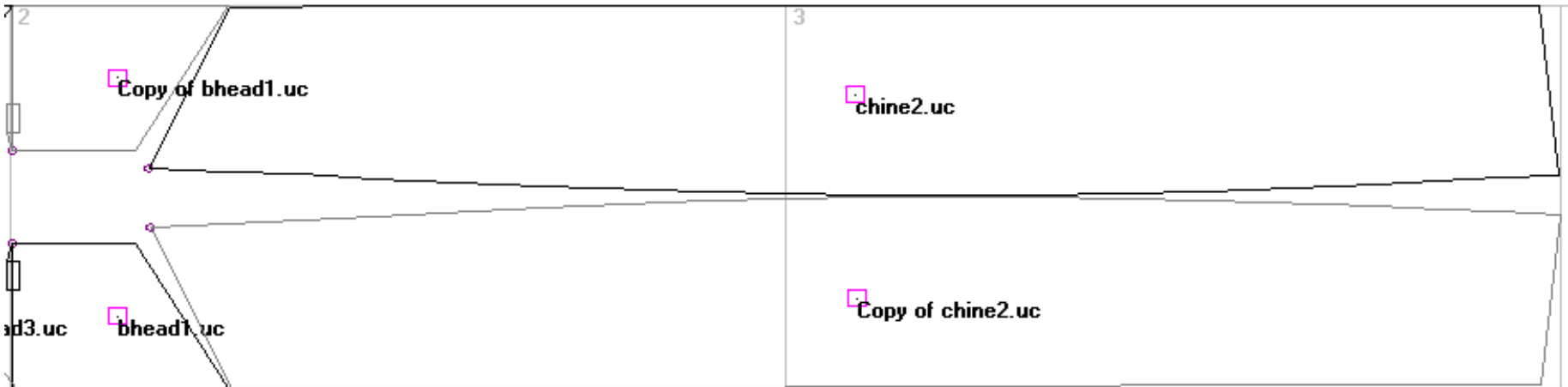
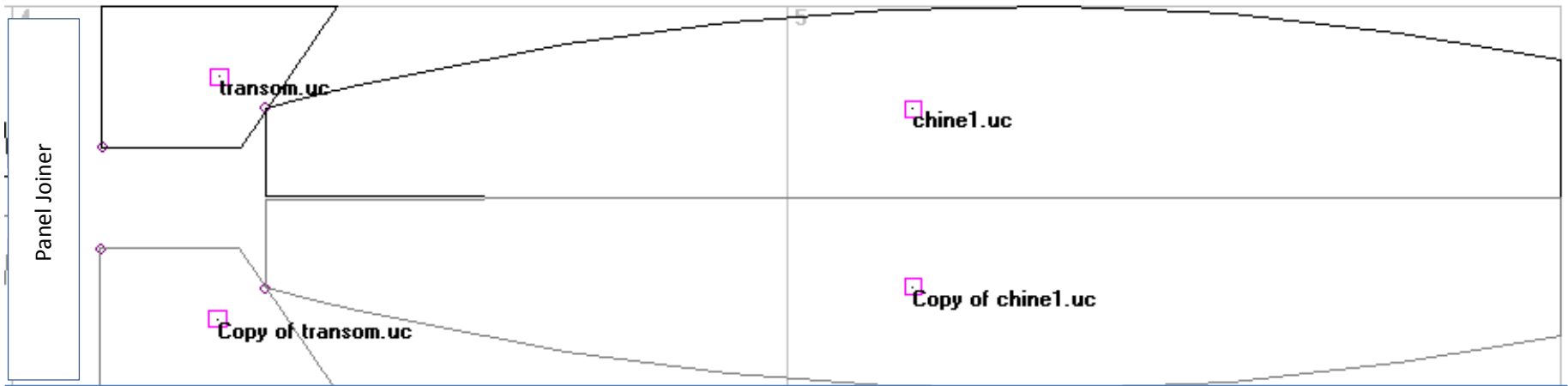
Freeboard: 20"

- Waterline at max displacement of 1000lbs shown
- Blue circle represents center of balance



- First bulkhead 24" from bow for good decked over storage.
- Third bulkhead 149" from bow and 20" from transom for good decked over storage.
- Second bulkhead 86" from bow.
- Open area between 1st & 3rd bulkheads 10'3"
- Boat can be build open, with traditional cabin, or with birdwatcher cabin





- Basic hull takes 5 sheets of plywood
- Add another sheet for fore and aft decks
- Bottom, transom, and bulkheads 3/8" ply
- Sides and bhead 1 1/4" ply
- Approximate weight of hull 200 lbs.

2 3/8" inch panels

Sheet 4

Sheet 5

transom1 (extend lines to panel edges)

11-1" by 30-3"

28-2" by 30-3"

40-2" by 48"

11-1" by 48"

Transom 2(extend lines to panel edges)

11-1" by 17-5"

28-2" by 17-5"

40-2" by 0-0"

11-1" by 0-0"

Bottom (extend lines to panel edges)

31-3" by 35-2"

37-1" by 36-5"

42-8" by 38-0"

48-4" by 39-2"

68-6" by 43-1"

88-7" by 45-7"

12-6" by 47-4"

33-6" by 48-0"

54-7" by 47-0"

75-7" by 44-5"

82-5" by 43-4"

89-4" by 42-3"

95-8" by 41-1"

31-3" by 12-6"

31-3" by 12-6"

37-1" by 11-3"

42-8" by 9-8"

48-4" by 8-6"

68-6" by 4-7"

88-7" by 2-1"

12-6" by 0-4"

33-6" by 0-0"

54-7" by 0-8"

75-7" by 3-3"

82-5" by 4-4"

89-4" by 5-5"

95-8" by 6-7"

2 1/4" panels

Sheet 2

Sheet 3

side1 (extend lines to panel edges)

17-1" by 27-5"

26-4" by 27-2"

35-7" by 26-7"

44-7" by 26-3"

65-5" by 25-3"

86-0" by 24-5"

9-7" by 24-2"

31-0" by 24-2"

52-1" by 24-6"

73-1" by 25-5"

80-6" by 25-8"

88-3" by 26-3"

95-6" by 26-6"

93-2" by 48"

86-5" by 48"

79-6" by 48"

72-7" by 48"

51-7" by 48"

30-5" by 48"

9-5" by 48"

85-6" by 48"

65-3" by 48"

44-6" by 48"

39-1" by 48"

33-1" by 48"

27-1" by 48"

bhead1 (extend lines to panel edges)

0-0" by 29-6"

15-3" by 29-6"

26-7" by 48"

0-0" by 48"

2sheets 1/4" ply

Sheet 2

Sheet 3

Sdie 2(extend lines to panel edges)

17-2" by 20-1"

26-6" by 20-5"

36-0" by 21-0"

45-0" by 21-5"

65-6" by 22-5"

86-1" by 23-4"

10-1" by 23-7"

31-1" by 23-8"

52-2" by 23-5"

73-2" by 22-7"

80-7" by 22-4"

88-5" by 22-1"

95-8" by 21-6"

93-5" by 0-0"

86-8" by 0-0"

80-0" by 0-0"

73-1" by 0-0"

52-1" by 0-0"

30-8" by 0-0"

9-7" by 0-0"

85-8" by 0-0"

65-5" by 0-0"

44-8" by 0-0"

39-3" by 0-0"

33-3" by 0-0"

bhead2 (extend lines to panel edges)

0-0" by 18-2"

15-3" by 18-2"

26-7" by 0-0"

0-0" by 0-0"

1 sheet 3/8" plywood

Sheet 1

stem (extend lines to panel edges)

29-4"x0-0"

36-6"x21-3"

0-0"x21-3"

7-2"x0-0"

bhead2 (extend lines to panel edges)

35-5"x28-3"

82-6"x28-3"

96" by 48"

22-2"x48-0"

bhead3 (extend lines to panel edges)

42-1"x18-1"

62-7"x18-2"

96" by 0-0"

29-1"x0-0"